

Download Installer (.msi)

Click Download Installer (.msi) for Windows only

The screenshot shows the ClaimHub website's desktop app download page. The browser address bar displays 'https://claimhub.cc/download'. The navigation menu includes 'Panels', 'How It Works', 'Pricing', 'Guide', and 'Download'. A 'Login' link and a 'Sign Up Free' button are visible in the top right corner. The main heading is 'ClaimHub Desktop App' with the subtext 'For clinics that prefer to run reconciliation on their own computer'. Three main options are presented: 'Use on Website' (recommended), 'Download for Windows', and 'Download for Mac'. Each option lists benefits and includes a call-to-action button. Below these options is an 'About the Desktop App' section providing additional context and a link to the pricing page.

ClaimHub

Panels How It Works Pricing Guide **Download** Login [Sign Up Free](#)

ClaimHub Desktop App

For clinics that prefer to run reconciliation on their own computer

Recommended

Use on Website

Reconcile directly at claimhub.cc. No download needed. Works on any device.

- Nothing to install
- Works on Windows, Mac, tablet
- Data processed securely, not stored after reconciliation
- Always up to date

[Start Reconciling](#)

Download for Windows

Run ClaimHub on your PC. Patient data never leaves your computer.

- Data stays 100% on your PC
- Maximum privacy (HIPAA compliant)
- Works offline after activation
- Same credits, same account

[Download Installer \(.msi\)](#)

Version 1.0.12 - Windows 10/11 - 115 MB - MSI installer (self-contained, bundles SQL LocalDB, auto-launches after install)

Download for Mac

Use ClaimHub on your Mac via the web version — full functionality, no download needed.

- Works on any Mac (Intel & Apple Silicon)
- No installation required
- Same features as Windows
- Same credits, same account

[Use ClaimHub on Mac](#)

Opens in your browser: Safari, Chrome, Edge

About the Desktop App

All options use the **same reconciliation engine** and the **same credits** from your account. Choose whichever works best for your clinic.

The Windows MSI installer has been tested with antivirus and anti-malware scans. When you download, Chrome may show a security prompt — this is normal for new software. Simply click "Keep" to proceed. Mac users can use the web version directly with full functionality.

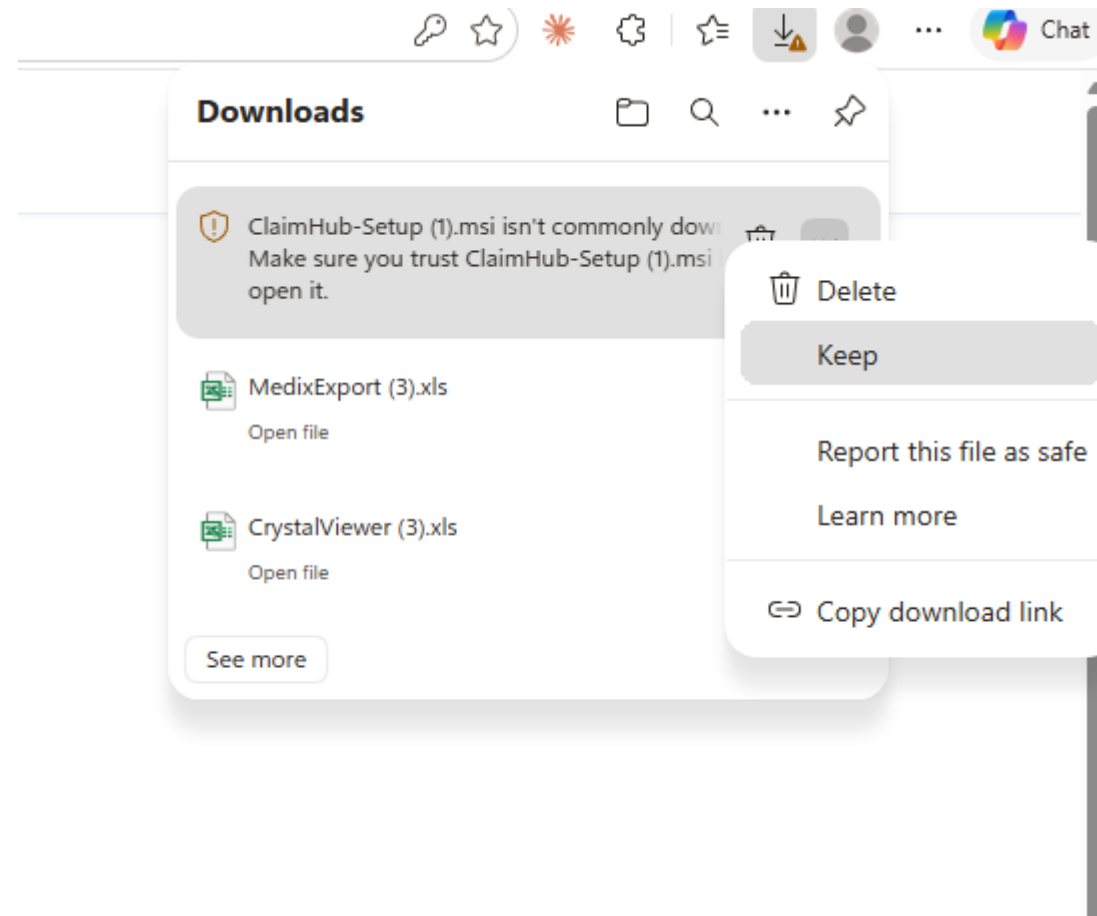
Credits are required for reconciliation on both website and desktop. [View pricing](#)

Keep

Click on ...

Click Keep

**This Microsoft security is shown due to the software signature not being paid (to provide lowest cost to you). You can run antivirus or antimalware on it if you want*

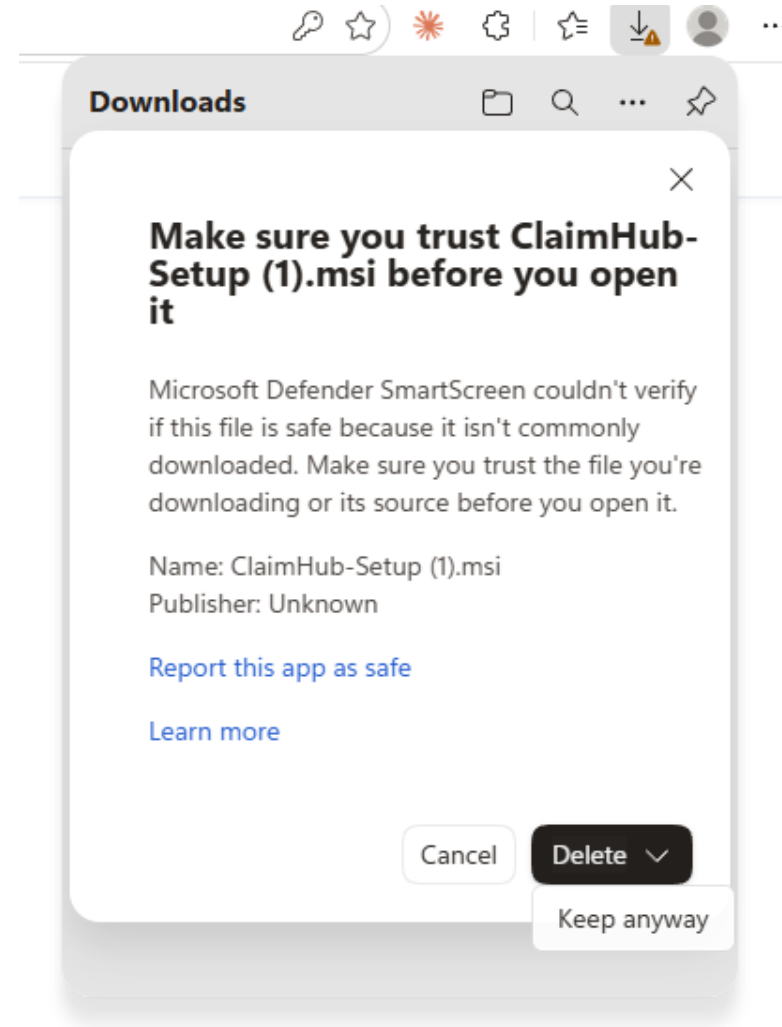


Keep Anyway

Click on the middle of V at the right of Delete

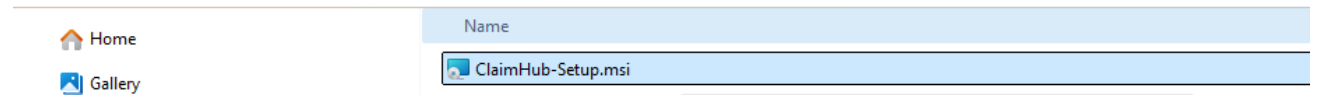
Click Keep anyway

**This Microsoft security is shown due to the software signature not being paid (to provide lowest cost to you). You can run antivirus or antimalware on it if you want*



Install Setup

Double click on ClaimHub-Setup.msi to run installer



Install

Click on Yes to install

ClaimHub software will auto-launch

